



TŪ I TE ORA SCHOLARSHIP - APPLICATIONS NOW OPEN

Kua whakatuwheratia ngā
karahipi Tū i te ora kia tonongia

People studying to help the environment thrive are encouraged to apply for council's Tū i te ora Scholarship.

The scholarships - which your rates help pay for - recognise, encourage, and support students to undertake study, research or training that relates to council's environmental and regulatory functions.

They also aim to build Māori capacity within Te Taitokerau, with three of the six scholarships earmarked for Māori who whakapapa to Te Taitokerau.

Recipients will receive \$4000 and paid work experience at council from November 2025 to February 2026.

This will be the sixth round of scholarships council has provided, with 30 students supported since the programme started in 2020.

Applications close Thursday 13 February 2025.

For more info visit: scholarships.nrc.govt.nz



TŌ TĀTOU TAITOKERAU Our Northland

GET LOCAL
NEWS DIRECT TO
YOUR INBOX. 

Sign-up to receive stories, events and updates on the great mahi happening around Northland - for our environment, for our mokopuna.

SCAN THE QR CODE
TO SIGN UP



For more info visit:
nrc.govt.nz



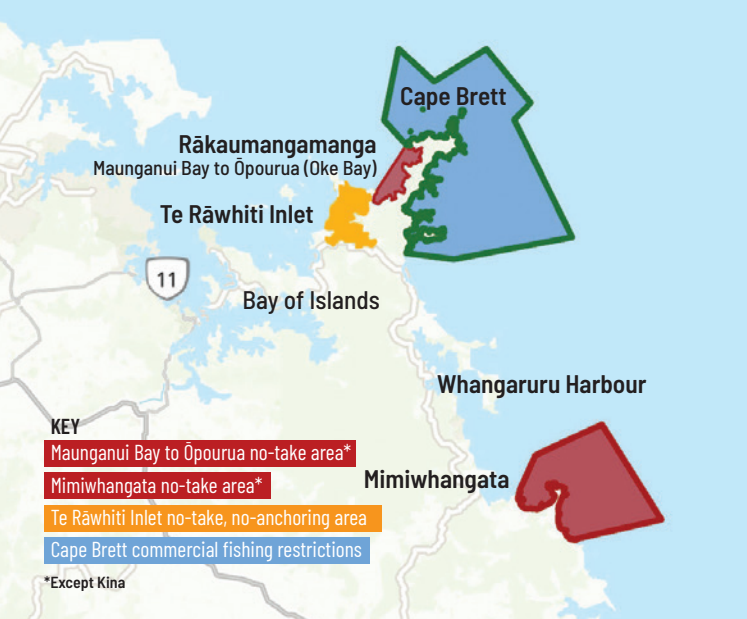
WORKING FOR A THRIVING TE TAITOKERAU



E mahi nei kia tōnui
ai Te Taitokerau

Jan 2025





STAYING SAFE IN THE WATER

Kia haumarū tātou i roto i te wai



PROTECT OUR MOANA

Tiakina te moana

If you're out on the water this summer, remember there are some places where you can't anchor, fish, or collect kai-moana.

In Rākaumangamanga from Maunganui Bay (Deep Water Cove) to Ōpourua (Oke Bay) and around the Mimiwhangata peninsula, no-take rāhui tapu marine protected areas are in place to help protect sensitive marine environments. Please don't fish or collect kai moana there.

In Te Rāwhiti Inlet, an invasive seaweed called exotic caulerpa is threatening our marine ecosystem, and it's important to stop it spreading any further. Exotic caulerpa can easily spread by getting caught and carried in anchors and fishing/diving gear, so restrictions are in place that mean it's illegal to anchor, fish, or dive in this area.

For more info visit: nrc.govt.nz/goodtogo

We're once again using the online Safeswim platform to deliver water quality results at popular beach and freshwater swim spots over summer.

Safeswim is a predictive modelling system that establishes a relationship between historical water quality results with environmental drivers (rainfall) to provide 'real-time and near-future swimability predictions'.

Information on 50 coastal and 20 freshwater sites popular with swimmers and other recreational water users over the warmer months is available year-round via the 'Safeswim' website safeswim.org.nz

Among a host of potential benefits of Safeswim are improved knowledge of water quality at swimming sites,

Get the latest info on swimming water quality: safeswim.org.nz

improving public understanding of potential health risks and providing real-time/forecasted water quality year-round.

Safeswim also provides information on tides, physical hazards and lifeguard patrols, where appropriate, providing a 'one-stop shop' for users to make informed decisions on where to swim before heading off.

Meanwhile, another way we help people stay safe in the water over summer is by contributing \$295,000 funding annually to Surf Life Saving Northern Region. This funding, via our Regional Rescue Services Rate, helps provide paid lifeguard services in key Northland locations during the peak holiday period.

RESIDENTS SURVEY I HE UIUINGA WHĀNUI O NGĀ KAINOHO

We'd love to hear from you about the work we do, what's important to you and how we can do better.

Follow the link or scan the QR code to share your views with us: nrc.govt.nz/residentssurvey

