

IKA TAKETAKE

MIHI WHAKATAU

E ngā kahui maunga o Te Taitokerau, tae atu ki ngā awa tūpuna o tēna hapū, o tēna iwi, tēnā tātou katoa.

E rere nei ngā mihi a te ngākau whakaiti i raro i ngā manaakitanga o ngā kaumatua, ngā kuia, me te haukainga o roto i Te Uri o Hau, Te Roroa me Te Uri o Tai. Nā koutou anō i whakamana i tēnei kaupapa manaaki i te taiao. Nā koutou anō i takoha mai i ngā kupu me ngā mātauranga mō ngā momo oranga o roto o Waitī, o Waitā.

Ahakoia he rerekē ētahi o ngā kupu me ngā mātauranga o tēna hapū, o tēna iwi o roto o Te Taitokerau, he mātauranga tuku iho ēnei hei whāngai ki ngā uri whakaheke, ki ngā kaitiaki taiao hoki.

He kohikohinga mātauranga tēnei i puta i ngā hui me ngā rangahau nā Te Kaunihera ā Rohe o Te Taitokerau i tautoko.

ACKNOWLEDGEMENTS

We acknowledge the generosity of the people of Te Uri o Tai who have shared their insights, wisdom and knowledge to create this resource for the people of Te Taitokerau.

We also wish to extend our gratitude to Te Uri o Hau and Te Roroa who have helped to review this taonga.

We acknowledge that some places may have different reo for our freshwater taonga, and celebrate with those utilising this resource in the learning of this particular mātauranga and body of knowledge.

This Reo Māori Fish Identification resource has been created for our tamariki (children) and pakeke (adults) to help assist with knowledge transfer of kupu (words) of Te Taitokerau. This resource is also for environmental educators, kaitiaki, and those who are wanting to learn more about the life in our water bodies from the mountains to the seas.

TUNA HEKE



He āhua rite te roa o ōna urutira o runga ki ērā o raro



He māngai nui tōna (ko ngā pito o ōna māngai kei tua atu i ōna kanohi!)



E hanga rite ana tōna āhua ki te tuna ōrea; he ōrite te roa o ōna urutira. He ika kaikiko tēnei



He parauri, he kiwikiwi, he mangu te tae, ā, he puku hiriwa



1 mita

He 1.2 mita te mōrahi



I te nuinga o te wā haere ai ia i te pō

Northland
REGIONAL COUNCIL

Te Kaunihera ā rohe o Te Taitokerau

IKA TAKEAKE



TUNA ŌREA



E hanga rite ana tōna āhua ki te tuna heke; he roa ake tōna urutira o runga i tōna tinana ki tērā o raro



He parauri, he kiwikiwi, he mangu te tae, ā, he puku hiriwa




I te nuinga o te wā
haere ai ia i te pō

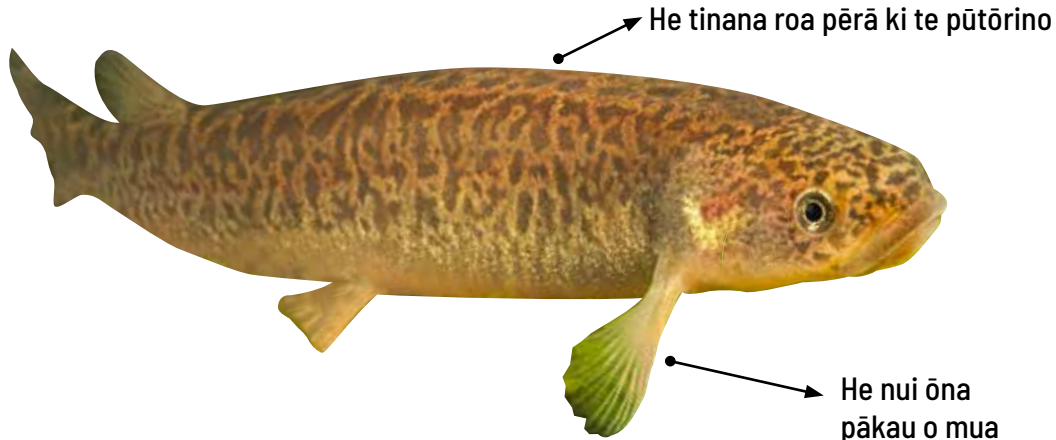
HE PITO KŌRERO

I a ia e kōpikopiko
haere ana ka
kūreherehe te kiri



 1 mita
He 1.2 mita te mōrahi

KŌARO



He rerekē ōna pākau nui o mua ki inanga kē; ko tā rātou he aro pū whakararo e punga ai ia i roto i ngā wai teretere. Ko ēnei ngā wai pai ki a ia



He tāhekeheke, he kōpurepure, he kārikihāura pīataata te tae

HE PITO KŌRERO

Mokorea ana te kitea i Te Taitokerau



I te nuinga o te wā haere ai ia i te pō



 1 mita
He 20 henemita te mōrahi

Northland
REGIONAL COUNCIL
Te Kaunihera ā rohe o Te Taitokerau

IKA TAKEAKE



KŌKOPU TAIWHARA

Ka mōhiohia hoki ia nā te matohu hiriwa kei muri tata i ōna pihapiha



He uriuri te tae, he tāhekeheke kōrahirahi, kōmā hoki kei ōna tahataha, tuarā anō hoki



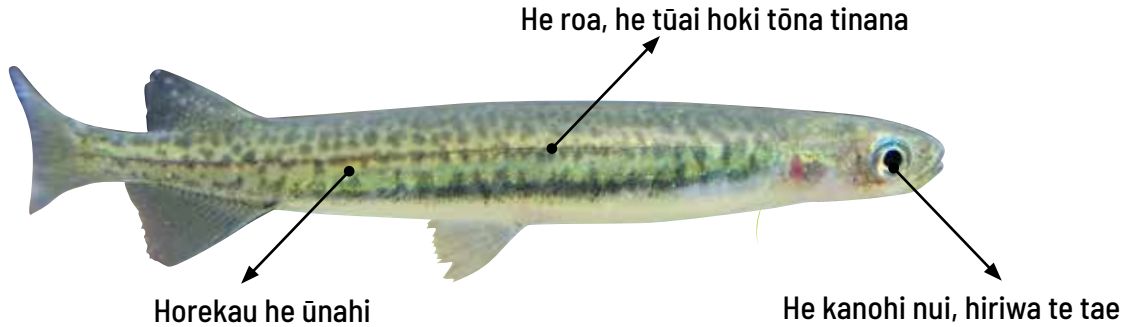
I te nuinga o te wā
haere ai ia i te pō





 1 mita

He 25 henemita neke
atu te roa

INANGA



 He āhua rite tōna hanga ki te paraki, ā, ka pērā hoki te pōhēhētia. He pūataata te kūao ika

 He hiriwa, he tuarā kārikihāura ātaahua, he kōtingotingo hoki

 1 mita
He 8 ki te 11 henemita


I te nuinga o te wā haere ai ia i te pō

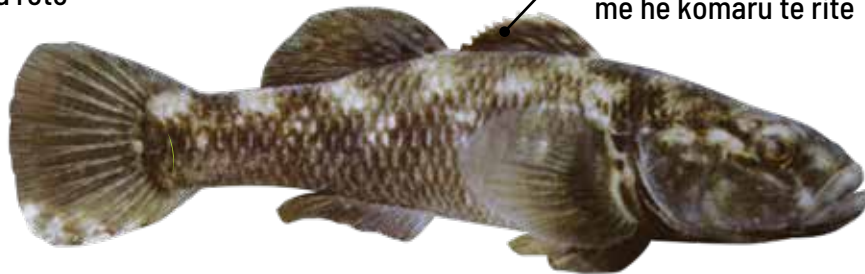
Northland
REGIONAL COUNCIL
Te Kaunihera ā rohe o Te Taitokerau

IKA TAKETAKE

TĪPOKOPOKO

He pai ki a ia ngā wai āta
rere me ngā roto

E whitu, e waru rānei ngā koikoi
o te urutira o runga i tōnā tuarā,
me he kōmaru te rite



He iti iho tōna rahi
ki te toitoi



I te nuinga o te wā he
kiwikiwi-parauri ki te mangu
te tae. He karihuna te tuarā
me ngā tahataha

IKĀ TAKETAKE

Northland
REGIONAL COUNCIL 
Te Kaunihera ā rohe o Te Taitokerau



Haere ai ia i te ao,
i te pō

HE PITO KŌRERO

Kitea mārama ana he
matohu i raro i ōna
kanohi, me he paihau
tori te rite



1 mita

He 16 henemita te mōrahi

TOITOI



Ka kaha kitea pātata
ki te moana



He kōura, he
kārikihāura kei
ōna pāpāringa



Ka tautohua i te tīpokopoko nā ngā koikoi, e
kore e nui atu i te ono, o te urutira o runga i
tōnā tuarā, me he kōmaru te rite



He uriuri, he tata mangu tonu
te tae i te nuinga o te wā



1 mita
He 24 henemita te mōrahi

HE PITO KŌRERO

He ika kirihuna ia,
he kiri kōiraira
kōura tōna



I te nuinga o te wā
haere ai ia i te pō

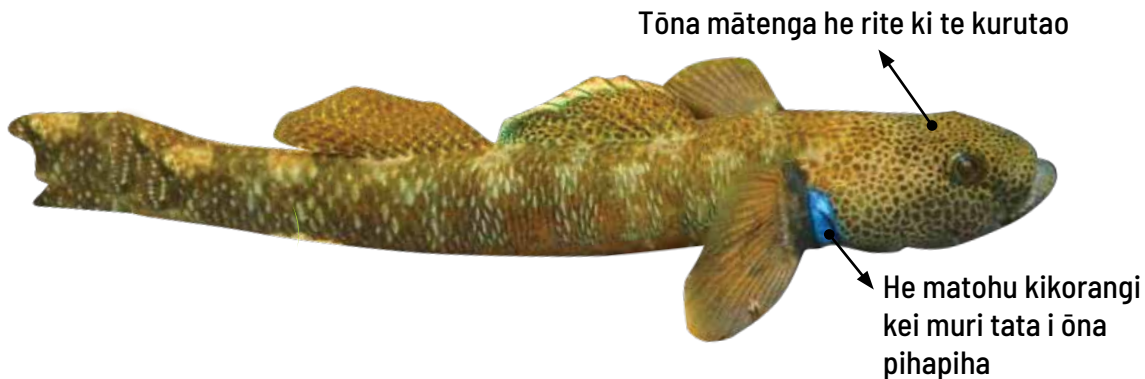
Northland
REGIONAL COUNCIL

Te Kaunihera ā rohe o Te Taitokerau

IKA TAKEAKE



KŌPUTEA PIHA PUKEPOTO



E kore e tino kitea i ngā awa o Aotearoa, hāunga ngā awa o Te Taitokerau



He parauri, he mangu ki te hāuratea te tae



I te nuinga o te wā haere ai ia i te pō

HE PITO KŌRERO

He kanohi kōiraira, he matohu kikorangi kei muri i ōna pihapiha



1 mita

He rima ki te whitu henemita te roa

KŌPUTEA PAKIKAU-KURA




He whero ngā urutira,
ngā pākau, me te hiku
o ngā tame



He tāhekeheke hauroki
kei ōna pāpāringa



He rauwhero, he kiwikiwi, he
parauri te tae, he kirihuna hoki

 1 mita
He 12 henemita te mōrahi



I te nuinga o te wā
haere ai ia i te pō

Northland
REGIONAL COUNCIL 
Te Kaunihera ā rohe o Te Taitokerau

IKA TAKETAKE



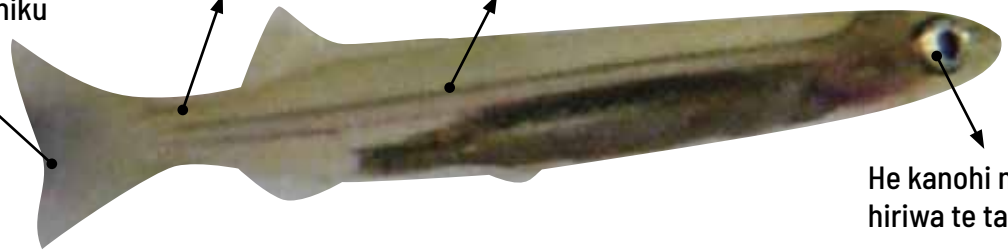
DUNE LAKE GALAXIAS

He kurutao te rite o tōna hiku

Horekau he ūnahi

He roa, he tūai hoki tōna tinana

He kanohi nui, hiriwa te tae



He kaha rawa atu tōna puataata. Ka kitea te māwhero i roto i tōna kiri pātata ki ōna pihapiha



PŌROHE




He kurutao te rite o tōna hiku



He unahi ōna (kāhore pērā ki te inanga).
He pūataata (ka kītea mārika ki roto i
tōna tinana) i tōna kūaotanga



He pīataata, he hiriwa te
tae, he rauwhero te tuarā

 1 mita
Tōna 12 henemita te roa

HE PITO KŌRERO

He ika whanokē - he
rite te kakara ki te
kūkama!



I te nuīnga o te wā
haere ai ia i te pō

Northland
REGIONAL COUNCIL 
Te Kaunihera ā rohe o Te Taitokerau

IKA TAKEAKE



KĒWAI



He kōura uriuri, iti iho ki tērā e noho moana ana, heoi he rahi ōna kuku o mua!



He oneone parauri ki te hāurapango te tae



I te nuinga o te wā
haere ai ia i te pō



1 mita
He 7 henemita te mōrahi

KUPUTAKA

hāurapango
hāuratea
hauroki
hiku
hiriwa
kaikiko
kairiri
kārikihāura
kīrearea
kirihuna
koikoi
kōiraira
kōmā
kōmaru
kōpikopiko
kōpurepure
kōrahirahi
kōtingotingo
koura
kūao
kūkama
kuku
kūreherehe
kurutao
matohu
mokorea

GLOSSARY

blackish brown
light brown
diagonally
tail
silver
flesh-eating
aggressive
be olive (in colour)
pest
camouflage
spikes
speckled
pale
sail
bend in opposite directions
blotches
thin
speckles
gold
young (fish)
cucumber
nippers
wrinkle
arrow-like formation
mark
scarce/rare

KUPUTAKA

mōrahi
muramura
paihau
pākau
pākurakura
parenga
pīataata
pihapiha
pūataata
puihi
punga
pūtōrino
rāngai
rauwhero
tahataha
tāhekeheke
tauirā
tautohu
tawatawa
tokorewa
tori
tūai
tuaitara
ūnahi
urutira
whanokē

GLOSSARY

maximum
bright
whiskers
fin (on sides of body)
reddish
bank
sparkle
gills
transparent
wild
anchor
tube-like flute
school of fish
bronze
around/all sides
striped
pattern
identify
mottled
forked
cat
thin
spine
scales
fin (on top and below)
weird