

# Climate Resilient Communities Fund – Kia Manawaroa Te Taitokerau

*Building resilient communities in a changing climate*

## FUND GUIDELINES



# Our commitment to a resilient and thriving Te Taitokerau

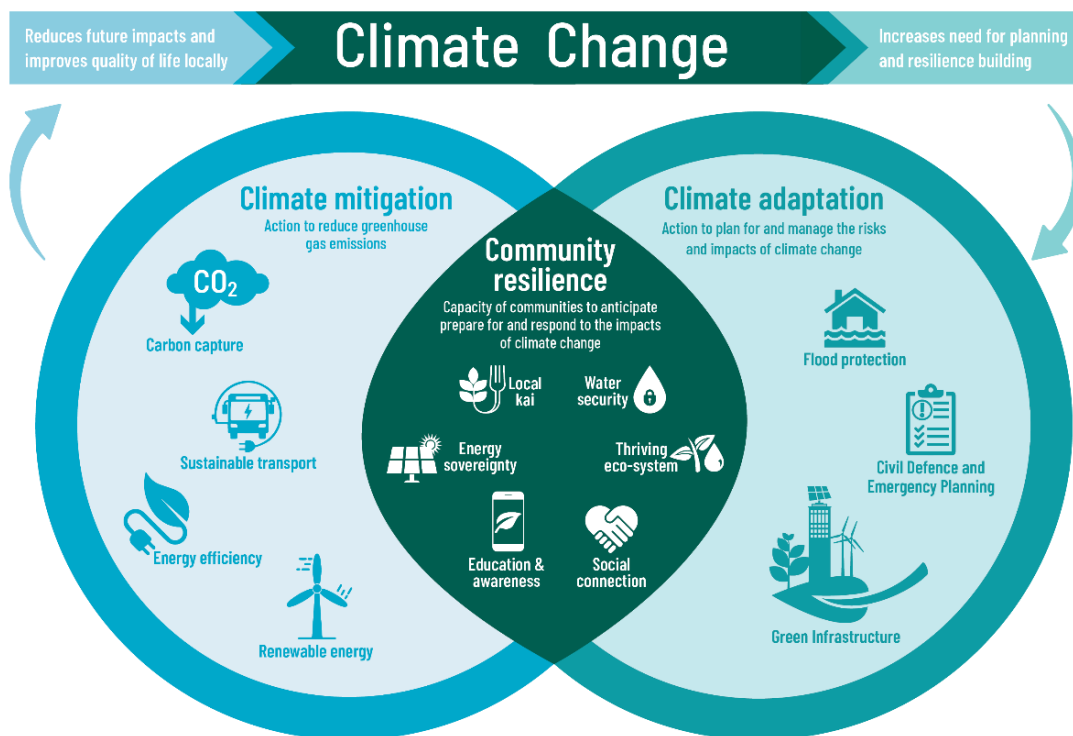
The changing climate is our generation’s biggest challenge, and this decade is crucial. We must respond by transforming how our society and economy operate so that Te Taitokerau is resilient and transitions proactively and equitably to a thriving net-zero emissions society before 2050.

Our communities need to be well prepared for the challenges a changing climate brings and the hazards our region faces. Floods, droughts and severe weather disrupt our lives, damage our homes and community infrastructure, impact our wellbeing, and make it harder to maintain a reliable food, water, and energy supply.

Building resilient communities is a priority for Northland Regional Council and central to council’s [Strategy for tackling climate change – Ngā Taumata o te Moana](#). Being resilient isn’t just about bouncing back from these events, but also about growing and getting better at dealing with future challenges. We need to reduce the greenhouse gas emissions causing climate change (Mitigation) and plan to manage the risks and impacts of climate change (Adaptation).

We can start by focusing on local needs and community-led solutions that will help our communities thrive into the future. Over the next 10 years, Northland Regional Council will invest \$9.2 million into projects that build community capacity and drive transformational change for community and tangata whenua climate resilience.

The **Climate Resilient Communities Fund** will support initiatives that improve water, kai and energy security, use nature-based solutions to help our environment thrive and that raise awareness and create strong social connections.



## About the fund

The **Climate Resilient Communities Fund** supports an equitable transition to a low-carbon, resilient and sustainable future, building community capacity and strengthening connection through community-led initiatives.

Funding is available for projects that:

- build capacity and scale-up regional initiatives for faster and more sustainable results.
- raise awareness and encourage a deeper understanding of the challenges our communities face.
- strengthen local connections and build enduring partnerships.
- create plans for transformational change that support community and tangata whenua climate resilience.
- encourage participation in action projects that make a difference now to build collective community resilience.

The fund prioritises four impact areas where communities can take immediate and meaningful action: Food resilience (Te Kai); Water resilience (Te Wai); Energy resilience (Te Ngao); and Nature-based Resilience (Te Taiao).



### Water Resilience (Te Wai)

focuses on proactively addressing the challenges posed by increasing water scarcity in a changing climate, by taking practical steps to enhance water resilience.



### Energy Resilience (Te Ngao)

aims to enhance energy security while reducing greenhouse gas emissions across Te Taitokerau.



### Nature-based Resilience (Te Taiao)

looks to nature for solutions to build climate resilience, enhancing ecosystem resilience, regenerating food and farming systems, and sequestering carbon through forest, kelp or wetland restoration.



### Food Resilience (Te Kai)

focuses on creating a low-carbon, sustainable and resilient regional food system in Northland, while fostering community and tangata whenua well-being and connection.



The fund will financially support community-led climate resilience initiatives that adhere to the following principles, including those led by, and aiming to benefit, tāngata whenua:

**PUBLIC GOOD:** Initiatives deliver significant outcomes and benefit to the broader community and are not for individual or private gain.

**EQUITY:** Prioritise communities vulnerable to climate impacts and support an equitable transition to community climate resilience.

**BUILD CAPACITY:** Empower communities to take charge of their climate resilience journey and enhance self-reliance.

**CONNECTION:** Engage multiple partners and strengthen community connections and relationships.

**CONTINUATION:** Show that outcomes of the project will continue beyond the initial scope of the grant.

**CIRCULAR ECONOMY:** Encourage circular and sustainable practices, reducing waste and promoting resource efficiency.

**DO NO HARM:** Initiatives should avoid negative consequences and consider future impacts.



## What we can fund

### IN SCOPE

- Project or programme costs including project-related resources, equipment and materials.
- Salaries and wages to implement the project.
- Resourcing expertise or technical support to provide specific climate-related advice.
- Events/engagement/hui/kōrero that advance the outcomes of the project.

### OUT OF SCOPE

- Activities driven by private gain or without a significant community benefit.
- Debt servicing or repayment.
- Activities promoting religious or political causes.
- Public services that are the responsibility of central government (such as core education or primary health care).
- Physical works where consents or permits are required but have not yet been obtained.
- Retrospective funding.

## Who can apply

Applicants to the Climate Resilient Communities Fund can be:

- community or neighbourhood groups;
- tāngata whenua (hapū or iwi groups / marae committees, or other legal Māori entities created for the collective betterment of Māori);
- education providers including schools, early childhood centres, kōhanga reo, kura and tertiary institutions / kaupapa Māori wānanga; and
- social enterprises and not-for-profit businesses.

Applicants must be based in Te Taitokerau / Northland, and the proposed project must be implemented within this region. GST registration is not a requirement.

Applicants must either be a legal entity registered in New Zealand - such as an incorporated society, charitable trust, or not-for-profit limited-liability company - or an organisation or group without legal entity status that is partnering with an organisation that has legal entity status.

*If your organisation is not a legal entity, you may partner with an appropriate organisation that does have legal status (umbrella organisation). You will need to work closely with the umbrella organisation, and their details must be provided in the application. The umbrella organisation will be the organisation contracted with, and it will be responsible for managing the funding and ensuring the delivery of the project.*

Applications led by government organisations will not be considered; however, Te Taitokerau-based organisations and projects, groups or organisations partnering with government organisations can be considered and are encouraged.

## How to apply

Applications can be submitted online at [www.nrc.govt.nz/climateresiliencefunding](http://www.nrc.govt.nz/climateresiliencefunding) up until **5pm on Tuesday 29 October**. You will need to create a login and password so make sure you keep a record of these details so you can get back into the site.

A summary of the application form is provided at the back of this document detailing the information we will need to assess projects. You can also download a Word version of the application form from the website. Having this on hand when you're preparing your application will help you fill out the required information, and if you're working with others, make it easier to collaborate on your application.



## Funding details

- Groups can apply for up to a maximum of **\$40,000 plus GST** per application each year.
- The minimum amount for project funding is **\$5,000 plus GST**.
- The total value of funding available each financial year is **\$600,000**.

*Mā te huruhuru,  
ka rere te manu*

*Only with feathers  
will the bird fly*

Successful applications will make some form of contribution to the project, which may include other funding through a co-funding arrangement, or an in-kind contribution of goods or services.

## How funding decisions are made

The Climate Resilient Communities Fund is a contestable fund with publicly advertised opening and closing dates. Funding is awarded through a competitive process where eligible applicants are evaluated transparently and fairly for specific projects or initiatives. Funding applications will be considered and decided upon by a panel of Northland Regional Council staff and the General Manager - Community Resilience. Applications will be assessed against the following assessment criteria:

- alignment with the grant purpose of delivering strategic and action-focused resilience outcomes;
- prioritisation of an equitable transition to achieving community climate resilience;
- project readiness, expected outcomes and risk; and
- capacity building through collaboration and connection, and scaling-up outcomes.

If an application is successful, a funding agreement will be drafted. This will outline the terms and conditions of the funding, a payment schedule, and details of reporting information.

**Public Transparency:** Applicants must agree to grant fund allocation details being made publicly available on the Northland Regional Council website. Transparency builds trust and encourages accountability.

**Northland Regional Council will respect and value mātauranga Māori (Māori knowledge) and tikanga-based approaches when fund applications are assessed, and throughout the fund process.**



## Measuring progress

Understanding the outcomes of funding investment is important to see how we're tracking towards a thriving community that is resilient to a changing climate. Over time we'll update our community on the progress this investment is making.

Think about how you'll measure the success of your project and how it contributes towards a climate resilient community. It might include some of the measures below.

|                                              |                               |                                           |                                                          |
|----------------------------------------------|-------------------------------|-------------------------------------------|----------------------------------------------------------|
| Greenhouse gas emissions reduced             | Amount of waste reduced       | Number of trees planted                   | Number of people with reduced exposure to climate impact |
| Number of commitments to a changed behaviour | Number of people engaged with | Knowledge gained from a new investigation | Number of groups connected                               |

## Reporting

We know that a written report doesn't always capture what a project has achieved, so we'll work with you to describe the real outcomes and achievements of this mahi. This can be done with videos, case studies, presentations, maps, graphs — but also written reports.

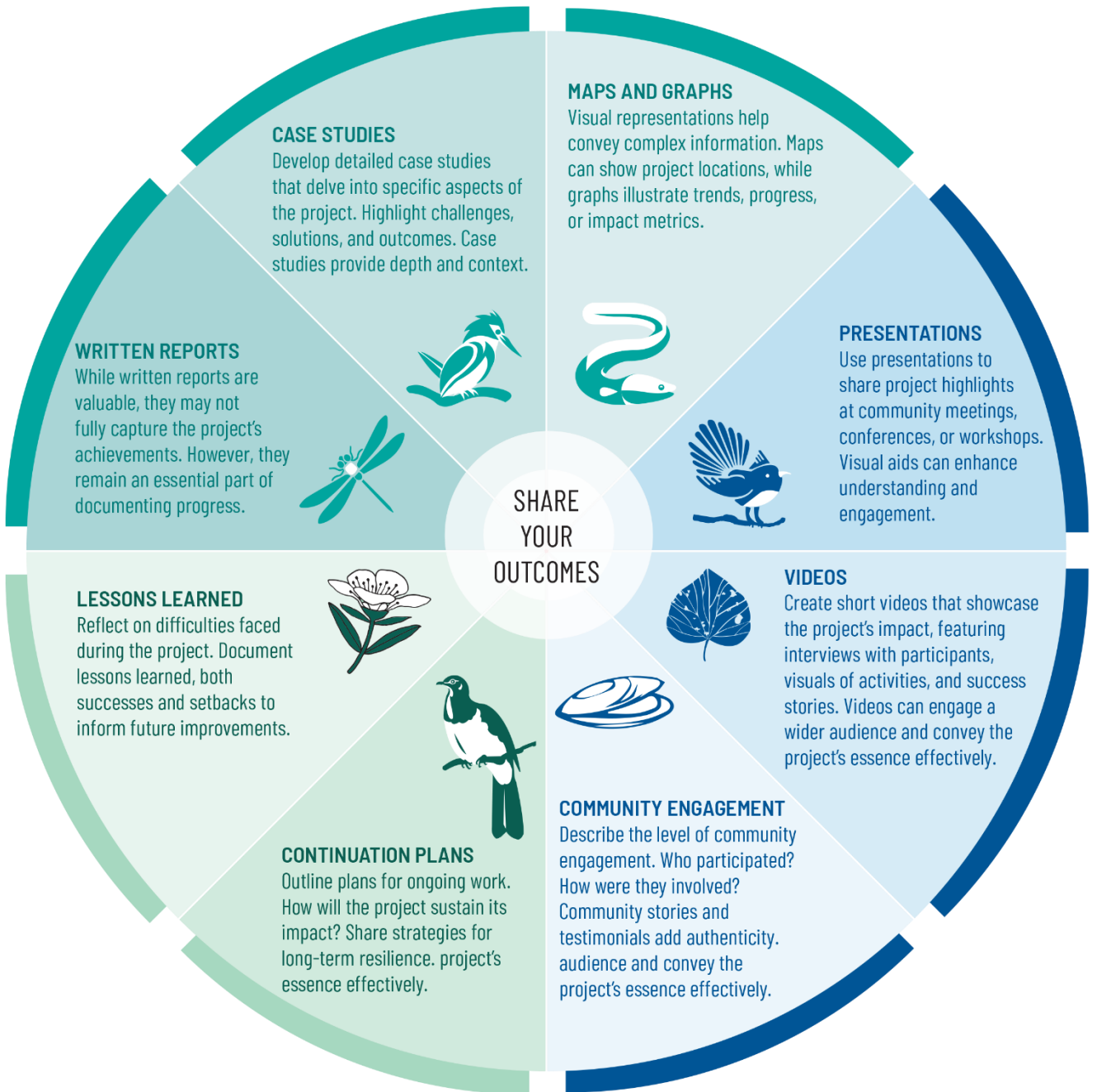
We'll be looking for:

- a description of the project, who was involved, and how it was achieved;
- information and data that measure outcomes;
- the positive impacts of the project and what this means for the community;
- the lessons learnt, including any difficulties you faced so that future improvements can be made;
- information on the level of engagement and how you encouraged the community to take part;
- plans for ongoing work, and what you plan to do next; and
- your message to others on how they can participate.

Where appropriate we'd like to share these stories and learnings to inspire others to get involved and play their part in building community climate resilience.

# Reporting approach

Work with the Fund Manager to establish a reporting approach that captures your story and documents your project outcomes effectively.





# Climate Resilient Communities Fund



**APPLY NOW**

## APPLY ONLINE

USE THIS APPLICATION FORM AS A GUIDE TO HELP PREPARE YOUR INFORMATION

**Closing date is Tuesday 29 October 2024**

| 1. Applicant details                                                                                                                                                                                                                                                                               |                                                                        |
|----------------------------------------------------------------------------------------------------------------------------------------------------------------------------------------------------------------------------------------------------------------------------------------------------|------------------------------------------------------------------------|
| <p><b>* Name of the Organisation applying</b><br/>Must match the name on the bank account information supplied</p>                                                                                                                                                                                 | Name                                                                   |
| <p><b>* Physical address</b></p>                                                                                                                                                                                                                                                                   |                                                                        |
| <p><b>Postal address</b><br/>If different from physical address</p>                                                                                                                                                                                                                                |                                                                        |
| <p><b>* Legal status of the organisation:</b><br/>Incorporated Society, Charitable Trust, Limited Liability Company, Māori Trust, School<br/>If Other (please complete next field)</p>                                                                                                             |                                                                        |
| <p><b>Umbrella organisation administering project funding</b><br/><i>Applicants with no formal legal structure must nominate an umbrella organisation (which has agreed to receive and administer funds on your behalf).</i><br/>Must match the name on the bank account information supplied.</p> | Name<br>Legal status                                                   |
| <p><b>* Key Project contact person</b></p>                                                                                                                                                                                                                                                         | Name<br>Position held in organisation<br>Phone number<br>Email address |
| <p><b>Alternative Project contact person</b></p>                                                                                                                                                                                                                                                   | Name<br>Position held in organisation<br>Phone number<br>Email address |
| <p><b>Umbrella Organisation contact person</b></p>                                                                                                                                                                                                                                                 | Name<br>Position held in organisation<br>Phone number<br>Email address |
| <p><b>Bank account details:</b><br/>Must match the Organisation name (or Umbrella Organisation name) supplied.</p>                                                                                                                                                                                 | Account name<br>Account number<br>GST registration                     |

| <b>2. Project information</b>                                                                                                                                                                                                                                                                                                                           |                                                                                                                                                                                                                                                                                          |
|---------------------------------------------------------------------------------------------------------------------------------------------------------------------------------------------------------------------------------------------------------------------------------------------------------------------------------------------------------|------------------------------------------------------------------------------------------------------------------------------------------------------------------------------------------------------------------------------------------------------------------------------------------|
| <b>* Project name</b>                                                                                                                                                                                                                                                                                                                                   |                                                                                                                                                                                                                                                                                          |
| <b>* Project location</b><br>(Neighbourhood, Community, Town, District, Northland Region)                                                                                                                                                                                                                                                               |                                                                                                                                                                                                                                                                                          |
| <b>* Amount of funding sought</b><br><i>The total funding available for any one application is between \$5,000 and \$40,000 excluding GST.</i>                                                                                                                                                                                                          | Amount                                                                                                                                                                                                                                                                                   |
| <b>* Project summary</b><br>Describe your project and what you hope to achieve. Include detail on: <ul style="list-style-type: none"> <li>How the project will benefit the wider community.</li> <li>The steps you will take to make it happen.</li> <li>How you will know if the project has been successful.</li> </ul>                               |                                                                                                                                                                                                                                                                                          |
| <b>* Which of the Climate Resilient Communities Fund priority impact areas does your project align to?</b><br>Select all priorities relevant to your project.                                                                                                                                                                                           | <input type="checkbox"/> Food resilience (Te Kai)<br><input type="checkbox"/> Water resilience (Te Wai)<br><input type="checkbox"/> Energy resilience (Te Ngao)<br><input type="checkbox"/> Nature-based resilience (Te Taiao)<br><input type="checkbox"/> Other (please provide detail) |
| <b>Who is your target audience?</b><br><i>Council prioritises communities most vulnerable to climate impacts and supports and equitable transition to community climate resilience.</i> <ul style="list-style-type: none"> <li>Please provide any information on the vulnerability of your target audience to the impacts of climate change.</li> </ul> |                                                                                                                                                                                                                                                                                          |
| <b>How many people do you expect to engage with or involve in this project?</b> <ul style="list-style-type: none"> <li>Describe how you will encourage the community to take part.</li> </ul>                                                                                                                                                           |                                                                                                                                                                                                                                                                                          |
| <b>Will any other individuals or organisations be supporting you on this project?</b> <ul style="list-style-type: none"> <li>Provide names/ organisation and how they will be involved</li> </ul>                                                                                                                                                       |                                                                                                                                                                                                                                                                                          |
| <b>Do you have aspirations or future plans to continue this work?</b> <ul style="list-style-type: none"> <li>What will you need to make this happen?</li> </ul>                                                                                                                                                                                         |                                                                                                                                                                                                                                                                                          |
| <b>Have you considered the possibility of negative consequences or future impacts of this work?</b><br><i>For example, planting large trees on a roadside berm may provide shade and biodiversity benefits, but could in future cause damage to power lines in a storm.</i>                                                                             |                                                                                                                                                                                                                                                                                          |
|                                                                                                                                                                                                                                                                                                                                                         |                                                                                                                                                                                                                                                                                          |

**How will you measure the contribution of your project to a climate resilient community?**

*If successful, on completion of your project we will work with you to share the outcomes of your mahi (work). This story could include measurables like, greenhouse gas emissions reduced, waste reduction, increased biodiversity, reduced vulnerability or exposure to climate impacts. It could also include the number of people engaged with or the behaviour change achieved.*

- Describe some of the ways you intend to measure your success.

**3. Project plan**

**\* When will the project take place?**

*The expected timeframe to complete the project is one year from grant of funds.*

Start date

End date

**\* Estimated timeframe for completing project outcomes**

- Provide key milestones and expected dates for delivery. These may be used in providing further detail in the financial table.

**Task – what will you do?**

**Start date**

**End date**

**Potential risks to the delivery of the project and how these would be managed**

*Consider not meeting milestone timeframes, budget over-runs.*

**4. Budget**

**\* Key deliverables: (add extra rows as required)**

*Itemised list / Activity description  
(please provide details of quantities and costs per item)*

**Delivery date:**

For groups **NOT**  
GST registered

For groups **WITH**  
GST registration

**Cost (Excl GST):**

**Cost (Incl GST):**

\$XXX.XX

\$XXX.XX

\$XXX.XX

\$XXX.XX

\$XXX.XX

\$XXX.XX

\$XXX.XX

\$XXX.XX

\$XXX.XX

\$XXX.XX

\$XXX.XX

\$XXX.XX

|                                                                                                                                                                                                                                                                                                                                                                                                                                                                                               |                          |                          |
|-----------------------------------------------------------------------------------------------------------------------------------------------------------------------------------------------------------------------------------------------------------------------------------------------------------------------------------------------------------------------------------------------------------------------------------------------------------------------------------------------|--------------------------|--------------------------|
| <b>TOTAL FUNDING REQUESTED:</b><br><i>This should equal the amount requested in section 2 of the application form.</i>                                                                                                                                                                                                                                                                                                                                                                        | <b>\$XXX.XX excl GST</b> | <b>\$XXX.XX incl GST</b> |
| <b>In Kind Contribution to project management</b><br>Contribution by applicant to the project. This may include financial contribution from other sources, or an in-kind contribution of goods or services, eg. volunteer hours, donated materials, advertising services.<br><i>This does not include the expected Volunteer hours from your target audience. For example, 50 people turn up to a planting day for 2 hours. We will ask you to report on this at the end of your project.</i> |                          |                          |
| <b>If Northland Regional Council is unable to fund your full request, would a smaller amount deliver some of your project?</b><br><ul style="list-style-type: none"> <li>• What is the minimum amount you would need and which activities could you achieve?</li> </ul>                                                                                                                                                                                                                       |                          |                          |
|                                                                                                                                                                                                                                                                                                                                                                                                                                                                                               |                          |                          |

## 5. Declarations

|                                                                                                                                                                                          |                                                             |
|------------------------------------------------------------------------------------------------------------------------------------------------------------------------------------------|-------------------------------------------------------------|
| <b>* Conflicts of interest:</b><br><i>Enter details of any existing relationships that members/ trustees of the applicant have with Northland Regional Council staff or Councillors.</i> |                                                             |
| <b>* I/We certify that to the best of our/my knowledge the information contained in this application is correct</b>                                                                      | <input type="checkbox"/> Yes<br><input type="checkbox"/> No |
| <b>* I/We certify that I/we have obtained the consent of all people involved to provide these details</b>                                                                                | <input type="checkbox"/> Yes<br><input type="checkbox"/> No |

## 6. Submitting your application

Applications can be submitted online at [www.nrc.govt.nz/climate-resilience-funding](http://www.nrc.govt.nz/climate-resilience-funding) up until **5pm on Tuesday 29 October**. You will need to create a login and password so make sure you keep a record of these details so you can get back into the site.

**For any enquiries related to the preparation of your application, please contact:**

Kim Wall  
Climate Resilience Advisor, Northland Regional Council  
Phone: 0800 002 004  
Email: [climateaction@nrc.govt.nz](mailto:climateaction@nrc.govt.nz)